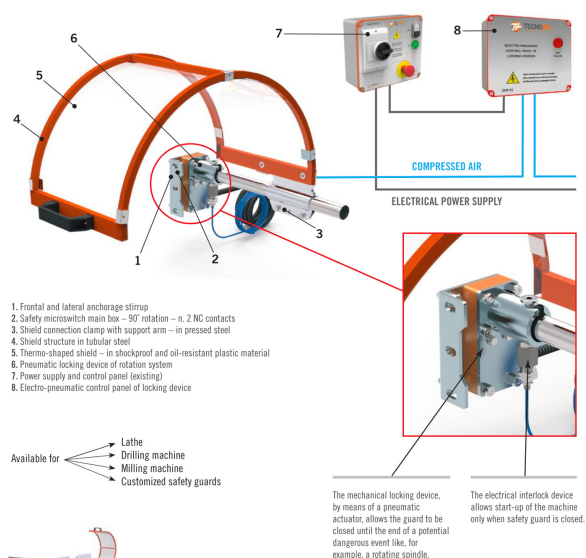




» INTERLOCKED SAFETY GUARDS WITH PNEUMATIC LOCKING DEVICE

PRODUCT SHEET

Last update:
04/13/2023



With more and more restrictive rules coming in the field of machine safety, security systems and safety guards are characterized by the use of increasingly advanced systems. In this context Tecno Più designs and manufactures its own customized products and a continuous restyling of its own range. The safety level of the system is ensured by a mechanical/pneumatic locking device on rotating pin. The system USES two power sources: electrical power supply, from the electrical panel, which controls the machine and the safety electromechanical systems and the compressed air, which operates the pneumatic lock actuator through the electropneumatic logical control panel **QCP01** and **QCP 02**. The electrical interlock device allows start-up of the machine only when safety guard is closed. The mechanical locking device, by means of a pneumatic actuator, allows the guard to be closed until the end of a potential dangerous event like, for example, a rotating spindle.

Our protections comply with the machinery directive 2006/43/CE

CE
<https://www.tecnopiu.it/>