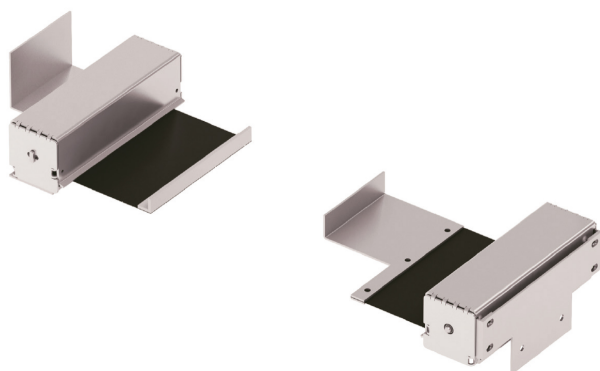


»» **LATHE GUARDS**

PAT 02

PRODUCT SHEET

Last update:
04/13/2023



FEATURES

Item created for the frontal "segregation" of the lathe mother screw and the advancing bars. Protects the operator from direct contact with moving parts and avoids the possibility of "snagging" of work garments. Made from two units to fix to the two extremities of the longitudinal carriage, equipped with a particular self-sliding roll, operated from the inside by multiple springs. The protective ribbon is made of spread textile material and is resistant to coolants and abrasions. Each unit is purposely designed for its side of the carriage and is equipped with appropriate anchorage stirrups. During movement of the longitudinal carriage, the two units self-roll and un-roll, constantly "segregating" the lathe mother screw and the advancing bars.
-Note: the extremity, equipped with the sliding roll, must be fixed onto the base side.

1. Base-side angular anchorage stirrups - in pressed steel
2. Carriage-side angular anchorage stirrups - in aluminium
3. Protective box of self-sliding roll
4. Protective ribbon - in TEMAT 202 technical thread

Roll-up safety guard for lathe advancing bars. Made from two units of self-roll up rolls, with tear and oil-resistant thread. Designed for protecting the operator from the machine advancing bars.

CODE	A	B	C	D	E	KG
PAT 02/120	1200	150	55	58	185	1,9
PAT 02/150	1500	200	60	65	235	2,5
PAT 02/200	2000	200	70	70	235	3,5
PAT 02/300	3000	250	90	90	285	5,6

Our protections comply with the machinery directive 2006/43/CE

