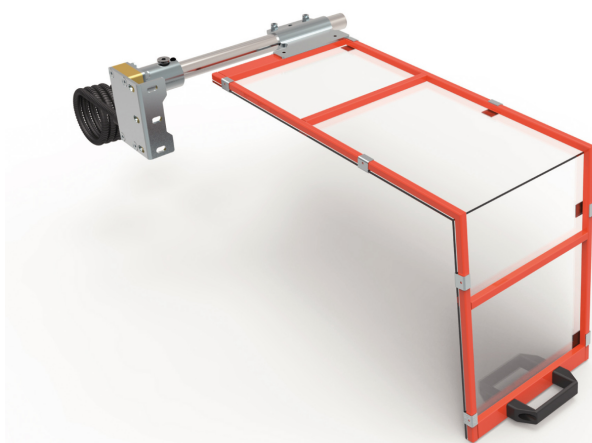


»» **LATHE GUARDS**

PTO 06

PRODUCT SHEET

Last update:
04/13/2023



FEATURES

The shield, bent at 100°, makes it particularly suitable for small lathes with the same conformation. Protects the operator from direct contact with the upper part of the lathe chuck and from lubricant-coolant projection.

Upperly, frontally and laterally attachable at the base. Equipped with shield, adjustable until the machine head.

Complete with safety microswitch.

1. Frontal and lateral anchorage stirrup
2. Safety microswitch main box - 90° rotation - n. 2 NC contacts
3. Shield connection clamp with support arm - in pressed steel
4. Shield structure - in tubular steel
5. Shield - in shockproof and oil-resistant plastic material

Safety guard equipped with steel-framed shield. Positionable until the machine head.

CODE	A	B	C	D	KG.
PTO 06/300	300	200	180	0-215	3,8
PTO 06/400	400	235	230	0-150	4,1
PTO 06/500	500	235	280	0-150	4,4
PTO 06/600	600	235	330	0-150	4,7

Our protections comply with the machinery directive 2006/43/CE

CE
<https://www.tecnopiu.it/>